

Building/Business Inspections Louisville Fire Department



KPI Owner: Lt. Colonel William Bowman

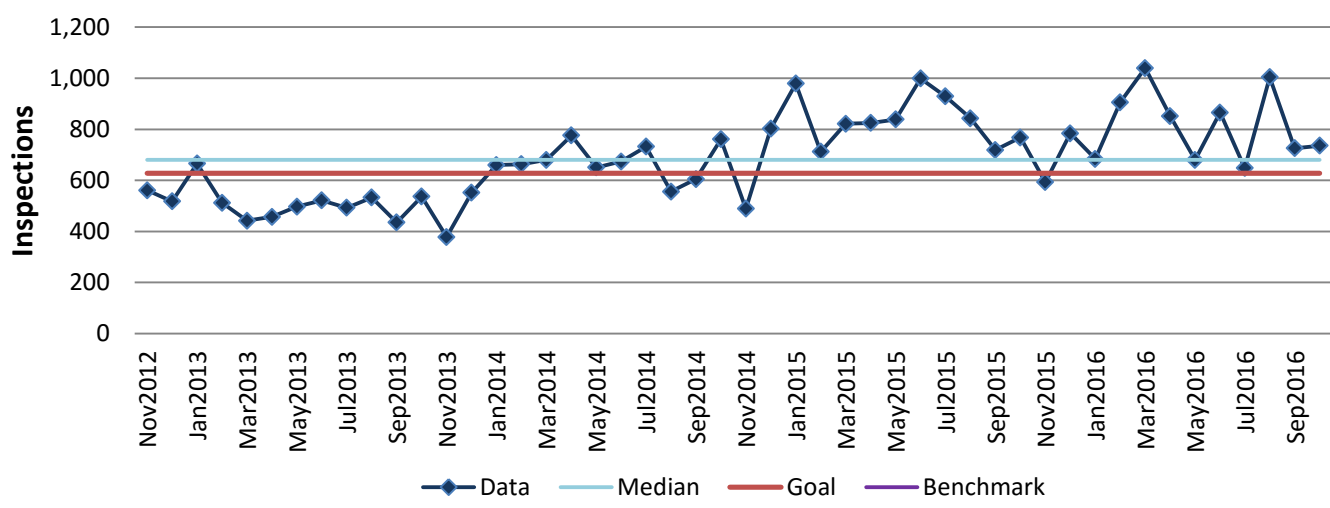
Process: Emergency Preparedness

Baseline, Goal, & Benchmark	Source Summary	Continuous Improvement Summary
Baseline: 6,916 inspections per year Goal: 7,530 code enforcement inspections (25% greater than 2013) per year (627.5 per month) Benchmark: TBD	Data Source: LFD Firehouse Software Goal Source: TBD Benchmark Source: TBD	Plan-Do-Check-Act Step 2: Validate problem: baseline, benchmark, & goal Measurement Method: The # of code enforcement inspections completed by fire inspectors. Why Measure: To maintain properly trained fire inspectors. Next Improvement Step: Get benchmark.

How Are We Doing?

Nov2015-Oct2016 12 Month Goal	Nov2015-Oct2016 12 Month Actual		Oct2016 Goal	Oct2016 Actual	
7,530	9,519		628	736	
Inspections	Inspections		Inspections	Inspections	

Building/Business Inspections



Root cause analysis is not necessary because there is no gap between the goal and current performance.