

# Lost Time Injury Rate (cases with days away from work) Louisville Fire Department



KPI Owner: Lt. Col. Adkisson

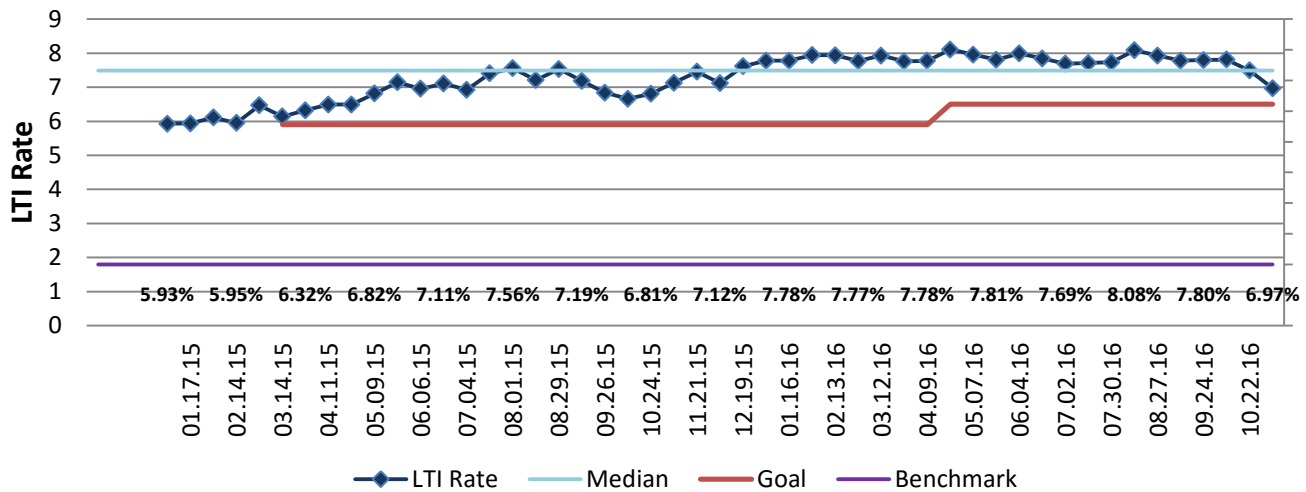
Process: Safety & Risk Management

Baseline, Goal, & Benchmark	Source Summary	Continuous Improvement Summary
Baseline: CY14: 5.86 per 100 employees Goal: To meet the benchmark of 6.5 per 100 employees Benchmark: 1.8% all local gov Nov2013	Data Source: OSHA Logs & Payable Time Goal Source: Scope Summary Benchmark Source: Bureau Labor Statistics	Plan-Do-Check-Act Step 3: Determine and quantify root causes Measurement Method: In a 12 month period, # of OSHA recordables with lost work days times 200,000 divided by the total # of hours worked Why Measure: minimize number & severity of workplace injuries/illness Next Improvement Step: Work within LFD Safety Committee to develop solutions and verify the measurement method with HR.

### How Are We Doing?

11.23.14-11.05.16 Rolling 52wk Avg Goal	11.23.14-11.05.16 Rolling 52wk Avg		11.08.15-11.05.16 Goal	11.08.15-11.05.16 Actual	
<b>6.25</b>	<b>7.75</b>	🚦	<b>6.50</b>	<b>6.97</b>	🚦
LTI Rate	LTI Rate		LTI Rate	LTI Rate	

## Lost Time Injury Rate (cases with days away from work)



### 11.08.15-11.05.16 Pareto Analysis

