

# Hours Lost Due to Work Related Injury/Illness Louisville Fire Department



KPI Owner: Maj. Randy Croney

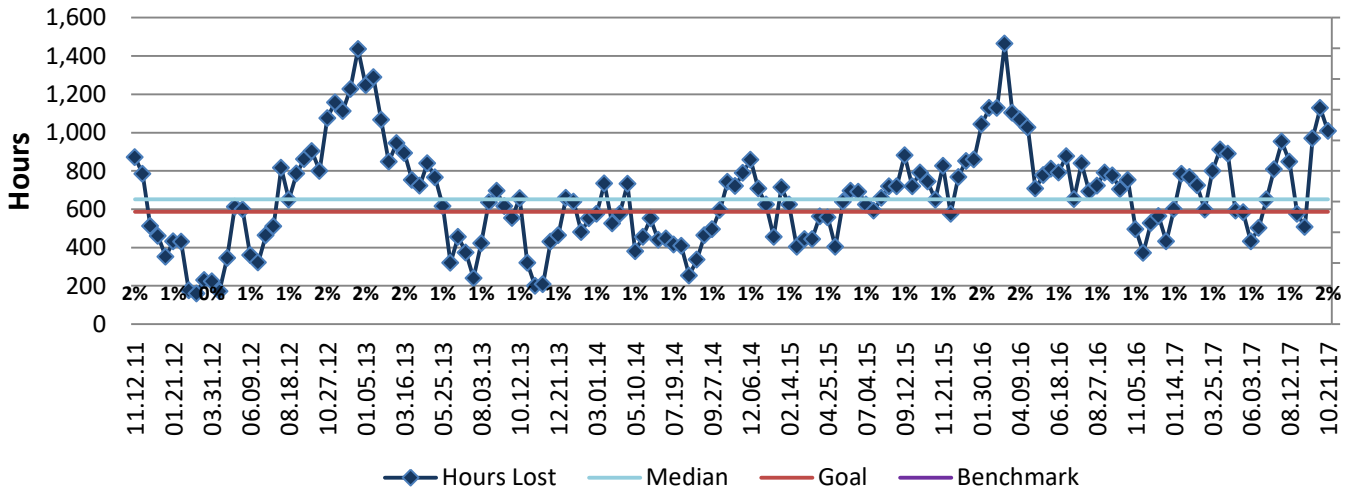
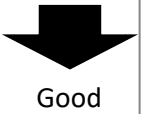
Process: Safety & Risk Management

Baseline, Goal, & Benchmark	Source Summary	Continuous Improvement Summary
Baseline: CY14: 14,531 hours in a year Goal: No more than 1,174 hours in a month or 587 hours per pay period (5.9 LTI)  Benchmark: TBD	Data Source: Payable Time PeopleSoft  Goal Source: Scope Summary  Benchmark Source: TBD	Plan-Do-Check-Act Step 4: Generate and prioritize potential solutions Measurement Method: The total number of hours per month employees were absent due to a work place injury or an illness contracted at work, rate calculated by dividing by total standard hours Why Measure: Minimize number & severity of workplace injuries/illness Next Improvement Step: Pilot short term and/or long term solutions.

### How Are We Doing?

10.23.16-10.21.17 12 Month Goal	10.23.16-10.21.17 12 Month Actual		10.08.17-10.21.17 Goal	10.08.17-10.21.17 Actual	
<b>15,262</b>	<b>18,028</b>	⬇	<b>587</b>	<b>1,008</b>	⬇
Hours	Hours		Hours	Hours	

## Hours Lost Due to Work Related Injury/Illness



## 10.23.16-10.21.17 Pareto Analysis

