

Lost Time Injury Rate (cases with days away from work) Emergency Services



KPI Owner: Jordan Mudd

Process: Employee Safety

Baseline, Goal, & Benchmark	Source Summary	Continuous Improvement Summary
Baseline: FY16 - 11.35% biweekly average Goal: Reduce the lost time injury rate to 8% in FY17 Benchmark: 1.8% all local gov Nov2013	Data Source: OSHA Logs & Payable Time Goal Source: Scope Summary Benchmark Source: Bureau Labor Statistics	Plan-Do-Check-Act Step 5: Pilot short term and/or long term solutions Measurement Method: In a 12 month period, # of OSHA recordables with lost work days times 200,000 divided by the total # of hours worked Why Measure: minimize number & severity of workplace injuries/illness Next Improvement Step: Identify and formalize modified duty assignments. Involve supv. to assign modified duty and injury reduction efforts. Modernize lifting equipment.

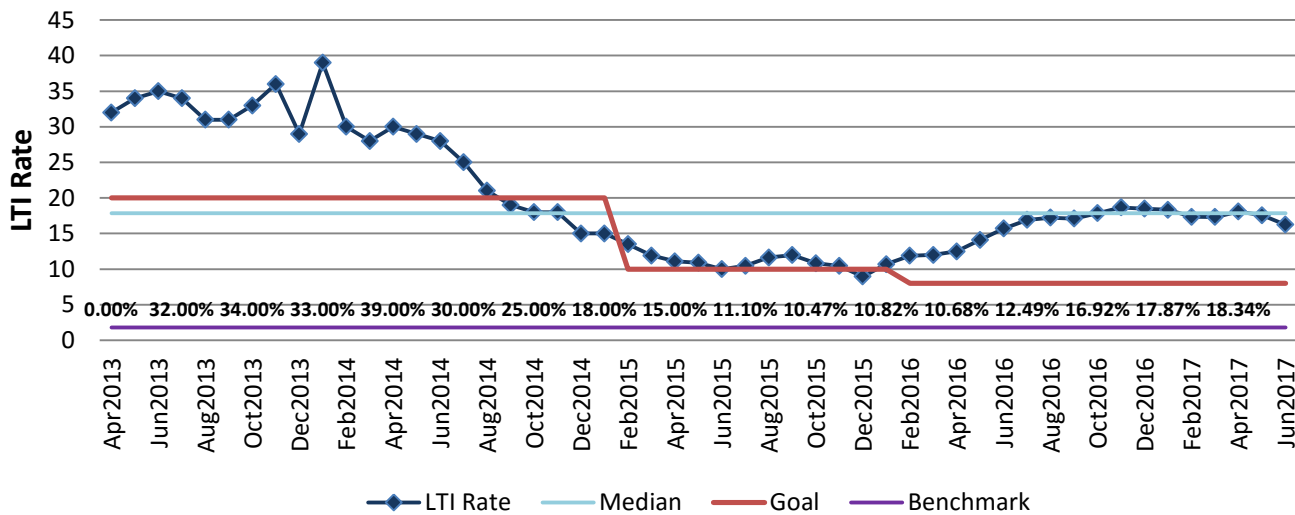
How Are We Doing?

04.02.14-04.01.17 Rolling 52wk Avg Goal	04.02.14-04.01.17 Rolling 52wk Avg		03.01.15-04.01.17 Goal	03.01.15-04.01.17 Actual	
8.64	13.94		8.00	18.09	
LTI Rate	LTI Rate		LTI Rate	LTI Rate	

Lost Time Injury Rate (cases with days away from work)



Good



05.18.15-06.30.17 Pareto Analysis

