

# Hours Lost Due to Work Related Injury/Illness Emergency Medical Services



KPI Owner: Jordan Mudd

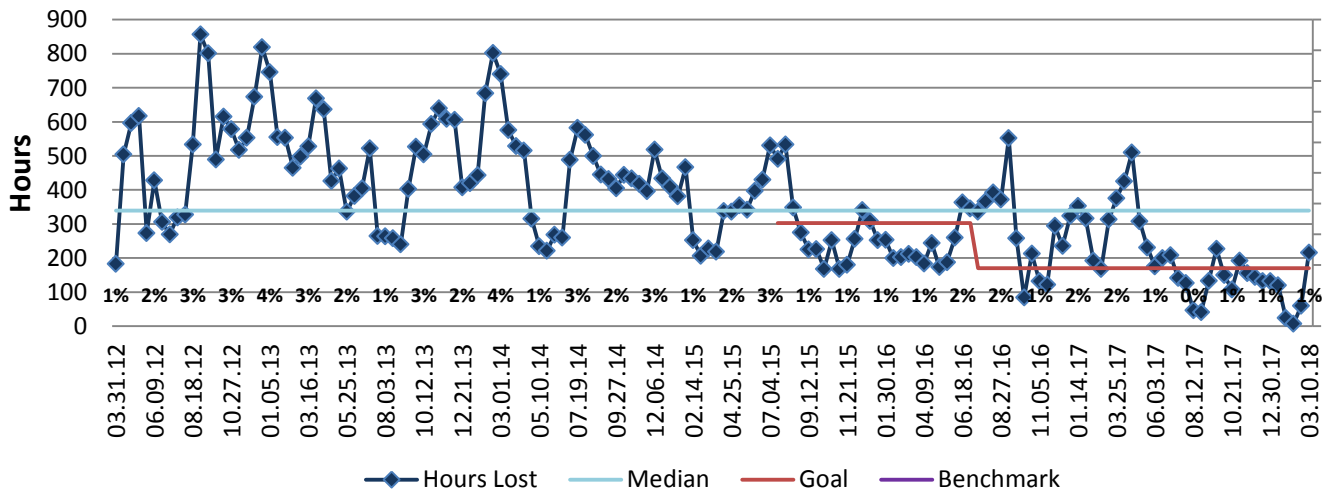
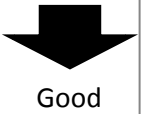
Process: Employee Safety

Baseline, Goal, & Benchmark	Source Summary	Continuous Improvement Summary
Baseline: FY17 - 286 biweekly average hours Goal: Reduce hours lost to 170 hours per pay period (one standard deviation below FY17 avg)  Benchmark: TBD	Data Source: Payable Time PeopleSoft  Goal Source: Scope Summary  Benchmark Source: TBD	Plan-Do-Check-Act Step 5: Pilot short term and/or long term solutions  Measurement Method: The total number of hours per month employees were absent due to a work place injury or an illness contracted at work, rate calculated by dividing by total standard hours  Why Measure: Minimize number & severity of workplace injuries/illness  Next Improvement Step: Continue modernization of lifting equipment, develop investigation/review process for injuries/vehicle accidents

### How Are We Doing?

03.12.17-03.10.18 12 Month Goal	03.12.17-03.10.18 12 Month Actual		02.25.18-03.10.18 Goal	02.25.18-03.10.18 Actual	
<b>4,420</b>	<b>4,589</b>		<b>170</b>	<b>216</b>	
Hours	Hours		Hours	Hours	

## Hours Lost Due to Work Related Injury/Illness



## Hours Off Truck Due to Work-Related Injury

