

Hours Lost Due to Work Related Injury/Illness Emergency Services



KPI Owner: Jordan Mudd

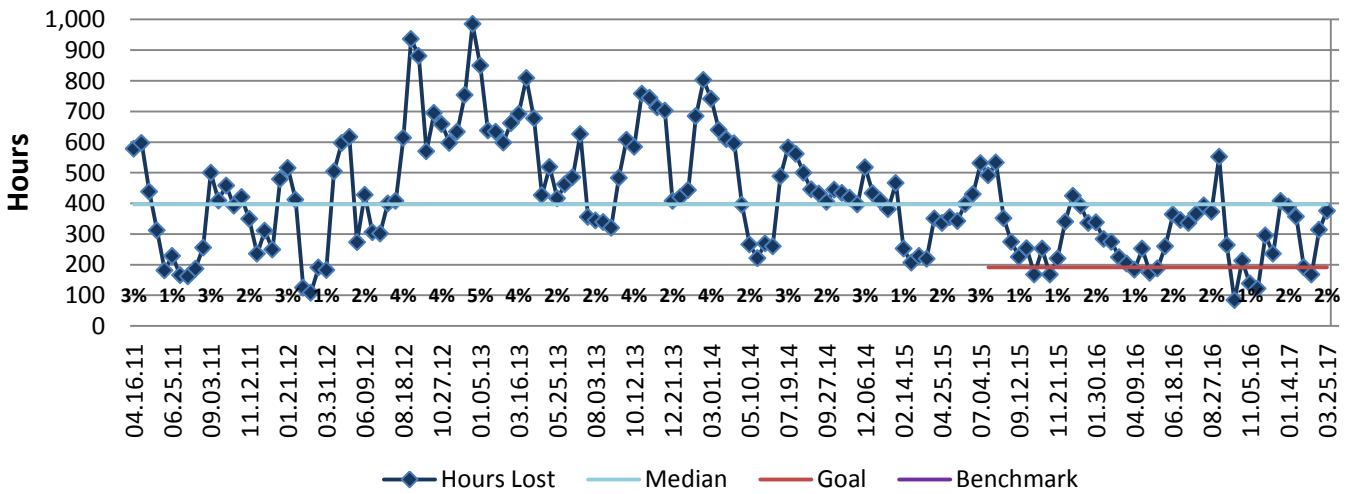
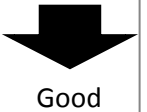
Process: Employee Safety

Baseline, Goal, & Benchmark	Source Summary	Continuous Improvement Summary
Baseline: FY16 average 289 hrs/pay period Goal: Reduce hours lost to 191 hours per pay period (one standard deviation below FY16 average) Benchmark: TBD	Data Source: Payable Time PeopleSoft Goal Source: Dept Management Team Benchmark Source: TBD	Plan-Do-Check-Act Step 5: Pilot short term and/or long term solutions Measurement Method: The total number of hours per month employees were absent due to a work place injury or an illness contracted at work, rate calculated by dividing by total standard hours Why Measure: Minimize number & severity of workplace injuries/illness Next Improvement Step: Identify and formalize modified duty assignments. Involve supv. to assign modified duty and injury reduction efforts. Modernize lifting equipment.

How Are We Doing?

03.27.16-03.25.17 12 Month Goal	03.27.16-03.25.17 12 Month Actual		03.12.17-03.25.17 Goal	03.12.17-03.25.17 Actual	
4,966	7,338		191	376	
Hours	Hours		Hours	Hours	

Hours Lost Due to Work Related Injury/Illness



03.27.16-03.25.17 Pareto Analysis

