

# Lost Time Injury Rate (cases with days away from work) Emergency Medical Services



KPI Owner: Jordan Mudd

Process: Employee Safety

Baseline, Goal, & Benchmark	Source Summary	Continuous Improvement Summary
Baseline: FY16 - 11.35% biweekly average Goal: Reduce the lost time injury rate to 8% in FY17  Benchmark: 19.6% (High volume urban EMS)	Data Source: OSHA Logs & Payable Time  Goal Source: Dept Management Team Benchmark Source: Maguire et al study	Plan-Do-Check-Act Step 5: Pilot short term and/or long term solutions Measurement Method: In a 12 month period, # of OSHA recordables with lost work days times 200,000 divided by the total # of hours worked Why Measure: minimize number & severity of workplace injuries/illness Next Improvement Step: Identify and formalize modified duty assignments. Involve supv. to assign modified duty and injury reduction efforts. Modernize lifting equipment.

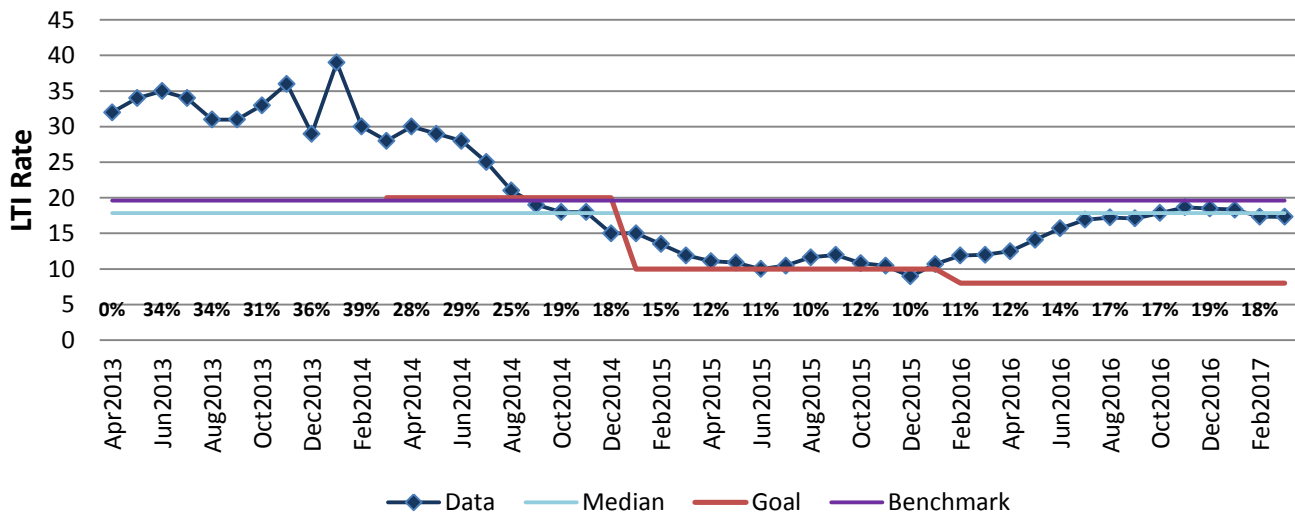
### How Are We Doing?

Apr2016-Mar2017 12 Month Goal	Apr2016-Mar2017 12 Month Average		Mar2017 Goal	Mar2017 Actual	
<b>8.00</b>	<b>16.35</b>		<b>8.00</b>	<b>17.35</b>	
LTI Rate	LTI Rate		LTI Rate	LTI Rate	

## Lost Time Injury Rate (cases with days away from work)



Good



## Mar2016-Feb2017 Pareto Analysis

