

# Hours Lost Due to Work Related Injury/Illness Information Technology



KPI Owner: Terri Yates

Process: Safety Management

Baseline, Goal, & Benchmark	Source Summary	Continuous Improvement Summary
Baseline: CY13 17.2 Hours Goal: Zero Hours lost due to Work Related Illness and Injury Benchmark: N/A	Data Source: Payable Time PeopleSoft Goal Source: Scope Summary Benchmark Source: N/A	Plan-Do-Check-Act Step 8: Monitor and diagnose Measurement Method: The total number of hours per month employees were absent due to a work place injury or an illness contracted at work, rate calculated by dividing by total standard hours Why Measure: Minimize number & severity of workplace injuries/illness Next Improvement Step: Continue with Excellent Safety Record

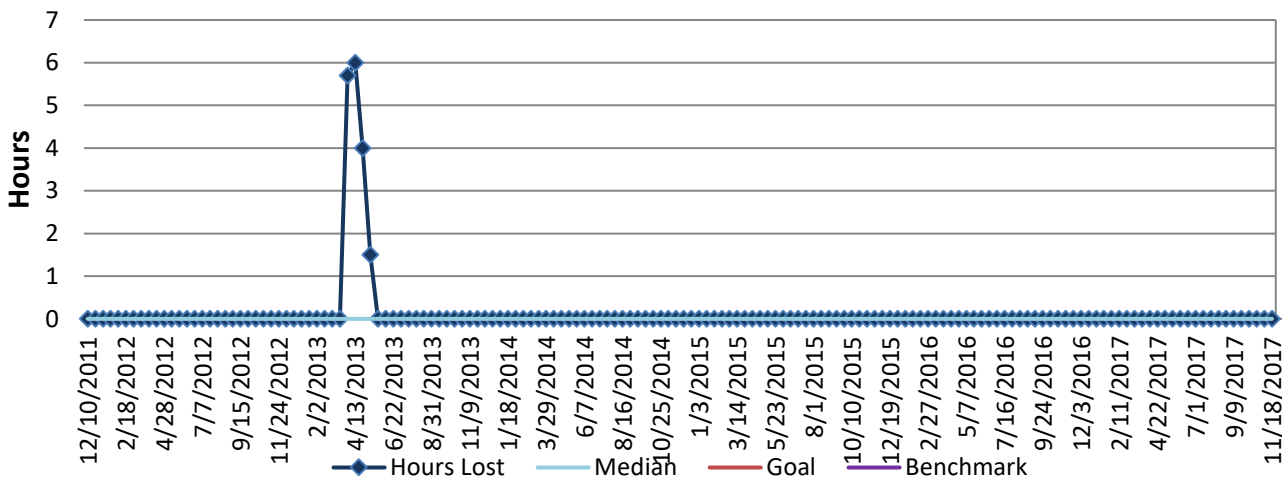
### How Are We Doing?

11.20.16-11.18.17 12 Month Goal	11.20.16-11.18.17 12 Month Actual		11.05.17-11.18.17 Goal	11.05.17-11.18.17 Actual	
<b>0</b>	<b>0</b>		<b>0</b>	<b>0</b>	
Hours	Hours		Hours	Hours	

## Hours Lost Due to Work Related Injury/Illness



Good



**Root cause analysis is not necessary because there is no gap between the goal and current performance.**