

Hours Lost Due to Work Related Injury/Illness Codes & Regulations



KPI Owner: Debbie Howell

Process: Safety

Baseline, Goal, & Benchmark	Source Summary	Continuous Improvement Summary
Baseline: FY 12 Monthly average: 99 hours Goal: Zero hours lost due to work related illness and injury Benchmark: TBD	Data Source: Payable Time PeopleSoft Goal Source: Scope Summary Benchmark Source: TBD	Plan-Do-Check-Act Step 8: Monitor and diagnose Measurement Method: The total number of hours per month employees were absent due to a work place injury or an illness contracted at work, rate calculated by dividing by total standard hours Why Measure: Minimize number & severity of workplace injuries/illness Next Improvement Step: Analyze current safety programs and create safety action plan.

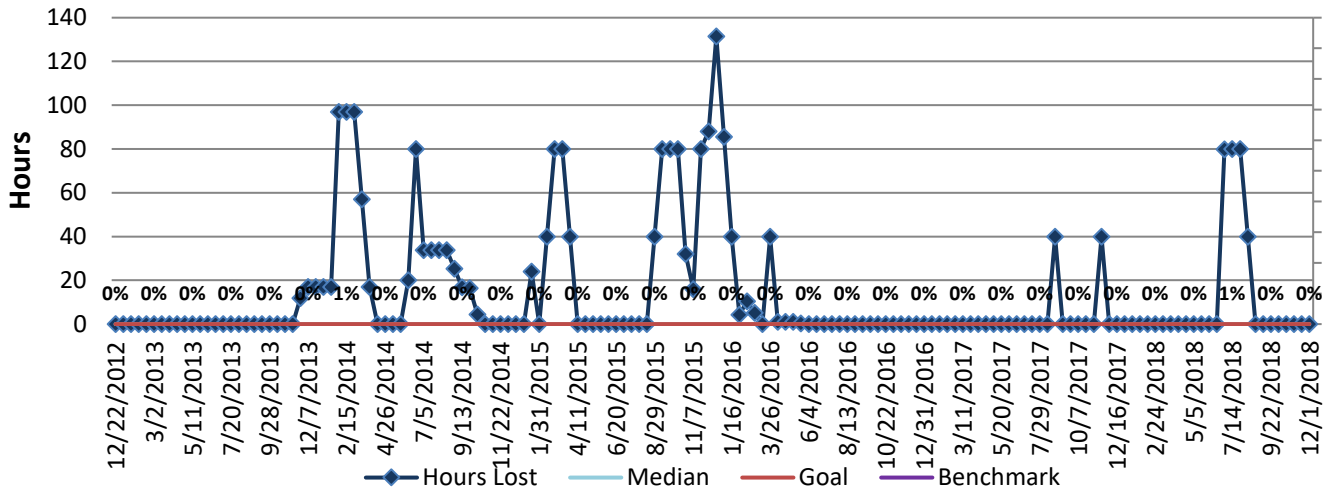
How Are We Doing?

12.03.17-12.01.18 12 Month Goal	12.03.17-12.01.18 12 Month Actual		11.18.18-12.01.18 Goal	11.18.18-12.01.18 Actual	
0	280		0	0	
Hours	Hours		Hours	Hours	

Hours Lost Due to Work Related Injury/Illness



Good



Root cause analysis is not necessary because there is no gap between the goal and current performance.