

# Hours Lost Due to Work Related Injury/Illness Louisville Fire Department



KPI Owner: Lt. Col. Adkisson

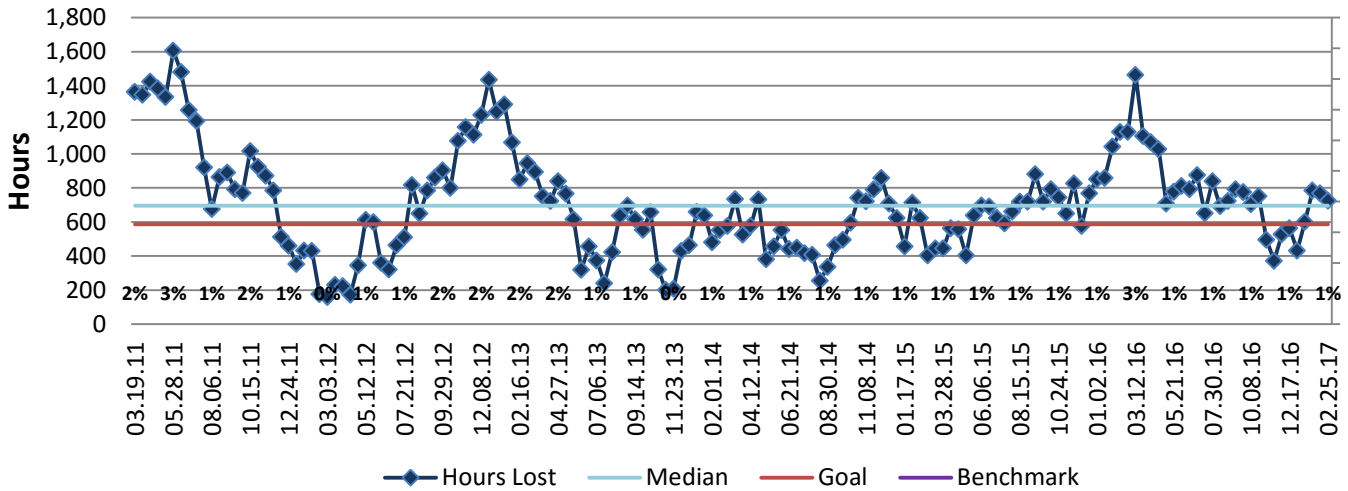
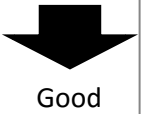
Process: Safety & Risk Management

Baseline, Goal, & Benchmark	Source Summary	Continuous Improvement Summary
Baseline: CY14: 14,531 hours in a year Goal: No more than 1,174 hours in a month or 587 hours per pay period (5.9 LTI)  Benchmark: TBD	Data Source: Payable Time PeopleSoft  Goal Source: Scope Summary  Benchmark Source: TBD	Plan-Do-Check-Act Step 4: Generate and prioritize potential solutions Measurement Method: The total number of hours per month employees were absent due to a work place injury or an illness contracted at work, rate calculated by dividing by total standard hours Why Measure: Minimize number & severity of workplace injuries/illness Next Improvement Step: Pilot short term and/or long term solutions

### How Are We Doing?

02.28.16-02.25.17 12 Month Goal	02.28.16-02.25.17 12 Month Actual		02.12.17-02.25.17 Goal	02.12.17-02.25.17 Actual	
<b>15,262</b>	<b>19,827</b>	🚦	<b>587</b>	<b>725</b>	🚦
Hours	Hours		Hours	Hours	

## Hours Lost Due to Work Related Injury/Illness



## 02.28.16-02.25.17 Pareto Analysis

